

Linear

TIMI R207

Fixture Guide

KKDC



Indoor | Surface | Dynamic output up to 1476lm/m (450lm/ft)

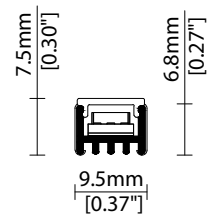


Key applications

- ✓ Architectural detail
- ✓ Backlighting & signage
- ✓ Cabinet & furniture
- ✓ Cove lighting
- ✓ Display case
- ✓ Indirect lighting
- ✓ Interior
- ✓ Mirror back lighting
- ✓ Retail display
- ✓ Shelving display
- ✓ Special effect

Key features

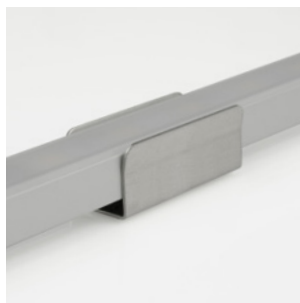
- ✓ Custom lengths
- ✓ Cutable (IP20)
- ✓ Constant Voltage (CV)
- ✓ Diffusion: spotting
- ✓ Extensive CCT range
- ✓ IP20 dry area
- ✓ Light on time (10 day delivery)
- ✓ LEDmix dynamic white
- ✓ Lens options



MOUNTING METHODS



KKCP-13 Lock clip



KKCP-01 Standard clip



KKCP-05 Lens lock clip



Inside lens accessory

Warm dim (Dynamic white)

Output Luminance %

min DIM1 Input Level max

— CH1 (Warmer)
— CH2 (Cooler)

LEDmix R207

CCT Selection 1 CCT Selection 2

LEDmix R209

CCT Selection 1 CCT Selection 2

LEDmix **warm dim** (Dynamic white) is a pre-programmed dimming curve setting enabling two different colour temperatures (CCTs) to blend harmoniously to achieve a warming lighting effect when dimmed.

KKDC LEDmix strips allow two separate CCT selections to be specified within the same PCB strip.

Use the table opposite to help determine which 2 CCT selections you require according to your preferred cool to warm dimming range.

**Note: The blended CCT is approx. 'cool-end' result at 100% brightness based on using the KKDC LED CCT specification.*

| CCT Selection 1 | CCT Selection 2 | |
|-----------------|---|---|
| | Blended CCT* | PCB CCT |
| 1900K~ | 2000K 2100K 2200K 2300K 2500K 2600K 2700K 3000K 3500K | 2100K PCB 2300K PCB 2500K PCB 2700K PCB 3000K PCB 3200K PCB 3500K PCB 4000K PCB 5000K PCB |
| 2100K~ | 2200K 2300K 2400K 2600K 2700K 2800K 3000K 3600K | 2300K PCB 2500K PCB 2700K PCB 3000K PCB 3200K PCB 3500K PCB 4000K PCB 5000K PCB |
| 2300K~ | 2400K 2500K 2700K 2800K 2900K 3100K 3700K | 2500K PCB 2700K PCB 3000K PCB 3200K PCB 3500K PCB 4000K PCB 5000K PCB |
| 2500K~ | 2600K 2800K 2800K 3000K 3200K 3800K | 2700K PCB 3000K PCB 3200K PCB 3500K PCB 4000K PCB 5000K PCB |
| 2700K~ | 2900K 3000K 3100K 3400K 3900K | 3000K PCB 3200K PCB 3500K PCB 4000K PCB 5000K PCB |
| 3000K~ | 3100K 3300K 3500K 4000K | 3200K PCB 3500K PCB 4000K PCB 5000K PCB |
| 3200K~ | 3300K 3600K 4100K | 3500K PCB 4000K PCB 5000K PCB |
| 3500K~ | 3700K 4300K | 4000K PCB 5000K PCB |
| 4000K~ | 5100K | 5000K PCB |

Tuneable white

Channel Mix Ratio %

min DIM1 Input Level max

— CH1 (Warmer)
— CH2 (Cooler)

LEDmix R207

CCT Selection 1 CCT Selection 2

LEDmix R209

CCT Selection 1 CCT Selection 2

LEDmix **tunable white** enables two different LED colour temperatures (CCTs) to be specified within the same LEDmix strip.

Each CCT selection can then be independently controlled (via your dimming control system) to adjust the warm & cool light output (CCT selections) and thus tailor a blended light colour of your choosing.

| CCT Selection 1 | CCT Selection 2 |
|-----------------|---|
| 1900K~ | 2100K 2300K 2500K 2700K 3000K 3200K 3500K 4000K 5000K |
| 2100K~ | 2300K 2500K 2700K 3000K 3200K 3500K 4000K 5000K |
| 2300K~ | 2500K 2700K 3000K 3200K 3500K 4000K 5000K |
| 2500K~ | 2700K 3000K 3200K 3500K 4000K 5000K |
| 2700K~ | 3000K 3200K 3500K 4000K 5000K |
| 3000K~ | 3200K 3500K 4000K 5000K |
| 3200K~ | 3500K 4000K 5000K |
| 3500K~ | 4000K 5000K |
| 4000K~ | 5000K |

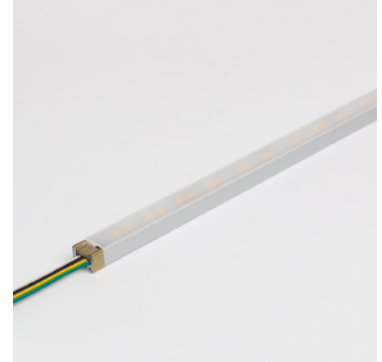
Linear

TIMI R207

Specification sheet



| | |
|-----------------------|--|
| Dimensions | H6.8/W9.5/L97-2014mm (H0.27/W0.37/L3.81-79.29in) (Double tail) / H6.8/W9.5/L90-2007mm (H0.27/W0.37/L3.54-79.01in) (Single tail) |
| PCB Cut-point | 83.3mm increment/2000mm max (3.28in increment/78.74in max) |
| LED Pitch | 13.9mm-144LED/m (0.55in - 44LED/ft) |
| Chip | s-line k-line |
| Cover/Optics | No cover (120°) / Semi-diffused (100°) / Black (90°) / KKLN-01 lens (14° or 36°) |
| CCT | s-line: 1900K/2100K/2300K/2500K/2700K/3000K/3500K/4000K/5000K k-line: 1900K/2100K/2300K/2500K/2700K/3000K/3500K/4000K/5000K |
| LED binning | s-line: 2.5-step MacAdam ellipse k-line: 3-step MacAdam ellipse |
| CRI | ≥ 92 |
| Lifetime | 50,000 hours @ 25°C (50,000 hours @ 77°F) |
| Operating temp | $T_a = -25$ to 40°C (T_c max = 73.3°C) $T_a = -13$ to 104°F (T_c max = 164°F) |
| IP Rating | IP20 |
| Finish | Silver anodised |
| Mounting | Surface mounting via clips |
| Power feed | Hardwire tails or male/female connectors |
| Control | 0-10V/1-10V/DMX/DALI |



LED Grading Key

Exclusive Grade

| | |
|------------------|-----------------------|
| s-line* | *KKDC tuned CCT range |
| 2-step CCT range | |

Base Grade

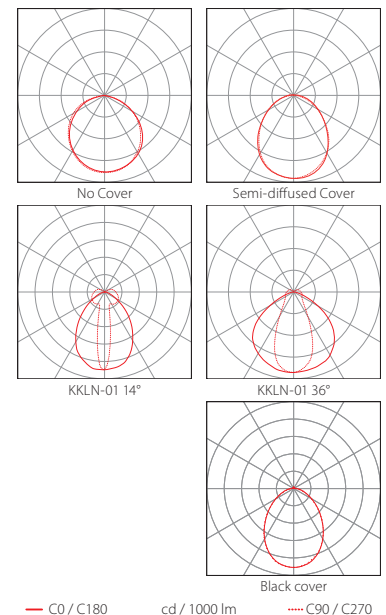
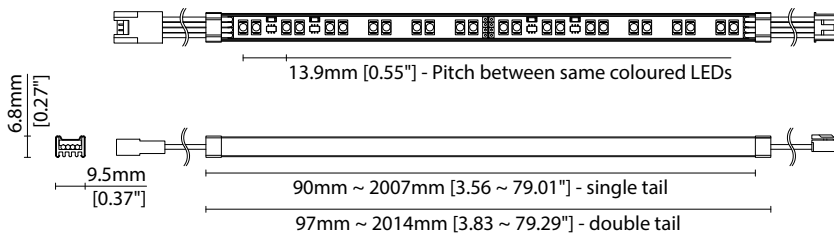
| | |
|---------------|---|
| k-line | 3-step commercial range Energy Star CCTs |
|---------------|---|

| | | |
|--------------------------|-----------------------|-----------------------|
| Power consumption | Supply voltage | Supply current |
| 16W/m (4.88W/ft) | 24V DC | 0.67A/m (0.20A/ft) |

Performance Data (2100K+5000K)

| | | | | | | | | | | | | | | |
|---------------|----|----|----|----|----|----|----|----|----|-----|-----|-----|-----|-----|
| | R1 | R2 | R3 | R4 | R5 | R6 | R7 | R8 | R9 | R10 | R11 | R12 | R13 | R14 |
| k-line | 93 | 98 | 97 | 91 | 93 | 96 | 88 | 77 | 54 | 94 | 93 | 84 | 95 | 99 |

| | No Cover | Semi-diffused | 14° (KKLN-01) | 36° (KKLN-01) | Black cover | CRI | R9 | Rf | Rg |
|---------------|-------------------------------|-------------------------------|-------------------------------|-------------------------------|--------------------------------|-----|----|----|----|
| s-line | 1476lm/m (450lm/ft) 92lm/w | 1204lm/m (369lm/ft) 75lm/w | 1272lm/m (388lm/ft) 80lm/w | 1323lm/m (403lm/ft) 83lm/w | 539lm/m (164lm/ft) 34lm/w | 93 | 55 | - | - |
| k-line | 1392lm/m (424lm/ft) 87lm/w | 1136lm/m (346lm/ft) 71lm/w | 1200lm/m (366lm/ft) 75lm/w | 1248lm/m (380lm/ft) 78lm/w | 509lm/m (155lm/ft) 31.8lm/w | 92 | 54 | - | - |



Data derived from independent UKAS/IESNA LM-79-08 accredited testing of production samples.

FIXTURE

| Model | Finish | Cover/Lens ¹ | Grade ² | LED | Colour (CCT) | Length Availability ³ | IP | Cable Length | Power Feed ⁴ | Input | | | | | | | | | | |
|-------|--------|-------------------------|--------------------|-----------------------------|--------------|----------------------------------|------|--------------|-------------------------|-------|---|---|------|----|-------------------|------|------------------------------------|------|--------|---|
| TIMI | TI | Silver Anodised | SA | No cover ⁵ | X | s | R207 | R207 | 1900K | 19 | m | 97.3-2014mm ⁷ 90.3-2007mm ⁸ 83.3mm increments | IP20 | 20 | 50mm (1.97in) | 0050 | Single no sheath tail | S00X | DC 24V | g |
| | | | | Semi-diffused ⁵ | D | k | | | 2100K | 21 | | | | | | | Double no sheath tail | D00X | | |
| | | | | KKLN-01D (14°) ⁵ | S | | | | 2300K | 23 | i | 3.83-79.29in ⁷ 3.56-79.01in ⁸ 3.28in increments | | | 300mm (11.8in) | 0300 | Single no sheath IP20 connector | S20X | | |
| | | | | KKLN-01U (36°) ⁵ | R | | | | 2500K | 25 | | | | | | | Double no sheath IP20 connector | D20X | | |
| | | | | Black cover ⁵ | Y | | | | 2700K | 27 | | (Specify length code OR total run length) | | | | | | | | |
| | | | | | | | | | 3000K | 30 | | | | | | | | | | |
| | | | | | | | | | 3500K | 35 | | | | | | | | | | |
| | | | | | | | | | 4000K | 40 | | | | | | | | | | |
| | | | | | | | | | 5000K | 50 | | | | | | | | | | |

¹ Refer to **Cover/Lens Options** on **Options** pages

² Refer to **LED Grading Key** on **Specification sheet** page

³ Refer to **Length Availability List** or enter total run length instead of length code

⁴ Refer to **Power Feed Options** on **Options** pages

⁵ Operating temperatures vary for TIMI with cover and TIMI without cover; please check with a KKDC engineer if operating temperature is limiting product application

⁶ LEDmix requires two colour temperature choices

⁷ Double clamp TIMI length

⁸ Single clamp TIMI length

Code Example:

| | | | | | | | | | | | | | | | | | | | | | | |
|------|---|-----------------|---|---------------|---|---|---|------|---|-------------|---|-------|---|------|---|---------------|---|---------------------------------|---|--------|---|---|
| TI | - | SA | - | D | - | s | - | R207 | - | 2150 | - | m | - | 514 | - | 20 | - | 0050 | - | D20X | - | g |
| TIMI | | Silver Anodised | | Semi-diffused | | | | R207 | | 2100K+5000K | | 514mm | | IP20 | | 50mm (1.97in) | | Double no sheath IP20 connector | | DC 24V | | |

ACCESSORIES

Mounting Accessories

| | |
|---------|-------------------------------------|
| KKCP-01 | Clip (1no.) |
| KKCP-51 | Clip (500no.) |
| KKCP-13 | Lock Clip |
| KKCP-05 | Lens Lock Clip for KKLN-01 (1no.) |
| KKCP-55 | Lens Lock Clip for KKLN-01 (500no.) |

* Refer to **Mounting accessories** on **Accessories** pages

Connection Accessories

| | |
|---------|---|
| KKCN-18 | 4 PIN LEDmix male & female 50mm (1.97in) pair |
| KKCN-19 | 4 PIN LEDmix male & female 300mm (11.81in) pair |
| KKCN-24 | 4 PIN LEDmix 300mm (11.81in) extension lead |

* Refer to **Power feed** on **Accessories** pages

PSU/Driver

0-10V/1-10V/DALI/DMX

* Refer to **Driver/PSU Options** page for details or provide requirement and KKDC to offer the suitable option

LED ENGINE VARIANTS (LED STRIP TYPE)

| Colour | LED | Lumen/m | Lumen/ft | W/m | W/ft | Spec Doc | Length | Increment |
|-------------------------------|-------------|--|--|-----------|-------------|------------------|---------------------------------|------------------------|
| Single CCT | R007 | 680 | 207 | 7 | 2.13 | TIMI R007 | 97-2014mm (3.81-79.29in) | 41.7mm (1.64in) |
| | R014 | 1380 | 421 | 14 | 4.27 | TIMI R014 | 97-2014mm (3.81-79.29in) | 41.7mm (0.27in) |
| | A010 | 1400 | 426 | 10 | 3.05 | TIMI A010 | 91-2014mm (3.58-79.29in) | 38.46mm (1.51in) |
| | A020 | 2800 | 853 | 20 | 6.10 | TIMI A020 | 91-2014mm (3.58-79.29in) | 38.46mm (1.51in) |
| Warm Dim/Dynamic White | R207 | 1476 | 450 | 16 | 4.88 | TIMI R207 | 97-2014mm (3.81-79.29in) | 83.3mm (0.55in) |
| RGB | 501 | Red: 150 Green: 320 Blue: 50 RGB: 460 | Red: 46 Green: 98 Blue: 15 RGB: 140 | 15.6 | 4.88 | TIMI RGB | 97-2014mm (3.81-79.29in) | 83.3mm (3.28in) |

* Performance data: s-line, no cover, 2100K + 5000K

TIMI R207

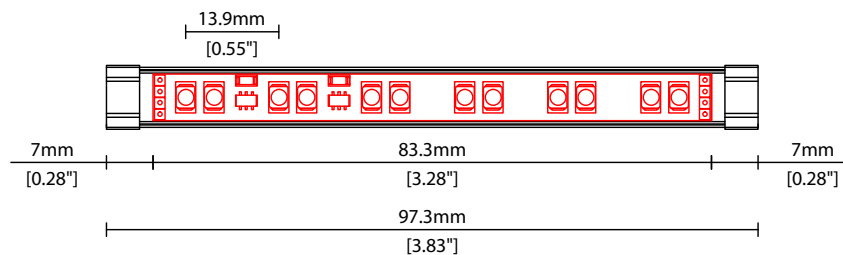
Length Availability List



| Length Code | | Fixture Length ¹ | | LED Strip ² | | End Cap Dimension | | Wattage (W) | Output (lm) |
|-------------|--------------|-----------------------------|--------------|------------------------|--------------|-------------------|--------------|-------------|----------------------|
| Metric | Imperial(US) | Metric | Imperial(US) | Metric | Imperial(US) | Metric | Imperial(US) | | 3000K (Test Data) |
| m0097 | i0004 | 97mm | 3.83in | 83mm | 3.28in | N/A | N/A | 1.33 | 116 |
| m0181 | i0007 | 181mm | 7.11in | 167mm | 6.56in | N/A | N/A | 2.67 | 232 |
| m0264 | i0010 | 264mm | 10.39in | 250mm | 9.84in | N/A | N/A | 4.00 | 348 |
| m0347 | i0014 | 347mm | 13.67in | 333mm | 13.12in | N/A | N/A | 5.33 | 464 |
| m0431 | i0017 | 431mm | 16.96in | 417mm | 16.40in | N/A | N/A | 6.67 | 580 |
| m0514 | i0020 | 514mm | 20.24in | 500mm | 19.69in | N/A | N/A | 8.00 | 696 |
| m0597 | i0024 | 597mm | 23.52in | 583mm | 22.97in | N/A | N/A | 9.33 | 812 |
| m0681 | i0027 | 681mm | 26.80in | 667mm | 26.25in | N/A | N/A | 10.67 | 928 |
| m0764 | i0030 | 764mm | 30.08in | 750mm | 29.53in | N/A | N/A | 12.00 | 1044 |
| m0847 | i0033 | 847mm | 33.36in | 833mm | 32.81in | N/A | N/A | 13.33 | 1160 |
| m0931 | i0037 | 931mm | 36.64in | 917mm | 36.09in | N/A | N/A | 14.67 | 1276 |
| m1014 | i0040 | 1014mm | 39.92in | 1000mm | 39.37in | N/A | N/A | 16.00 | 1392 |
| m1097 | i0043 | 1097mm | 43.20in | 1083mm | 42.65in | N/A | N/A | 17.33 | 1508 |
| m1181 | i0046 | 1181mm | 46.48in | 1167mm | 45.93in | N/A | N/A | 18.67 | 1624 |
| m1264 | i0050 | 1264mm | 49.76in | 1250mm | 49.21in | N/A | N/A | 20.00 | 1740 |
| m1347 | i0053 | 1347mm | 53.04in | 1333mm | 52.49in | N/A | N/A | 21.33 | 1856 |
| m1431 | i0056 | 1431mm | 56.33in | 1417mm | 55.77in | N/A | N/A | 22.67 | 1972 |
| m1514 | i0060 | 1514mm | 59.61in | 1500mm | 59.06in | N/A | N/A | 24.00 | 2088 |
| m1597 | i0063 | 1597mm | 62.89in | 1583mm | 62.34in | N/A | N/A | 25.33 | 2204 |
| m1681 | i0066 | 1681mm | 66.17in | 1667mm | 65.62in | N/A | N/A | 26.67 | 2320 |
| m1764 | i0069 | 1764mm | 69.45in | 1750mm | 68.90in | N/A | N/A | 28.00 | 2436 |
| m1847 | i0073 | 1847mm | 72.73in | 1833mm | 72.18in | N/A | N/A | 29.33 | 2552 |
| m1931 | i0076 | 1931mm | 76.01in | 1917mm | 75.46in | N/A | N/A | 30.67 | 2668 |
| m2014 | i0079 | 2014mm | 79.29in | 2000mm | 78.74in | N/A | N/A | 32.00 | 2784 |

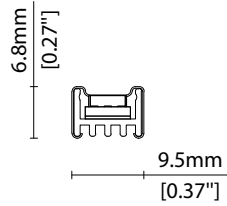
¹ Actual total overall length of light fixture (LED strip + end caps + void/wire hole)

² Actual length of PCB strip

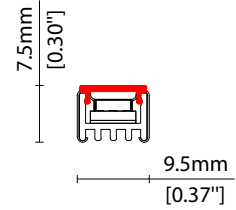


COVER/LENS OPTIONS

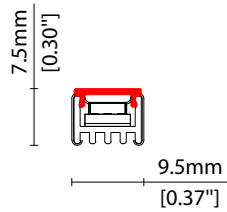
* Options are an integral part of the fixture ordering codes. Please refer to **Code Table** pages.



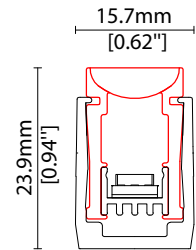
X No cover
W9.5/H6.8mm (W0.37/H0.27")



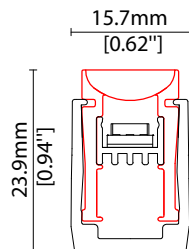
D Semi-diffused cover
Polycarbonate finish
W9.5/H7.5mm (W0.37/H0.30")



Y Black semi-diffused cover
Black translucent PMMA
25% light output
W9.5/H7.5mm (W0.37/H0.30")



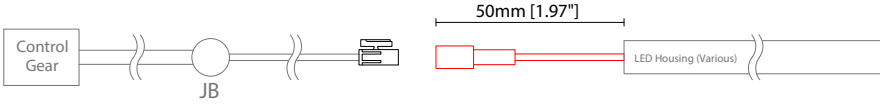
S 14° lens (KKLN-01D)
14° beam linear lens,
co-extruded PMMA
W12.8/H20mm (W0.5/H0.79")



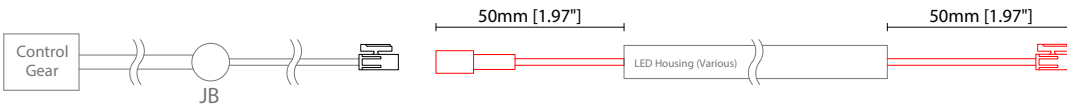
R 36° lens (KKLN-01U)
36° beam linear lens,
co-extruded PMMA
W12.8/H20.4mm (W0.5/H0.8")

POWER FEED OPTIONS

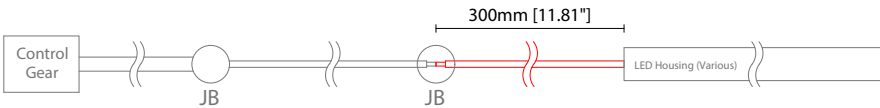
0050 S20X 50mm (1.97") Single no sheath IP20 connector



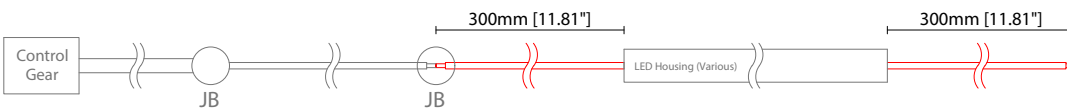
0050 D20X 50mm (1.97") Double no sheath IP20 connector



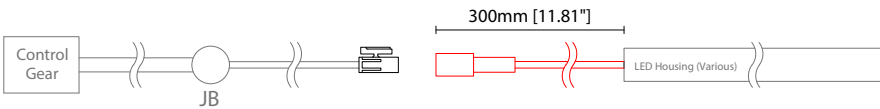
0300 S00X 300mm (11.81") Single no sheath tail



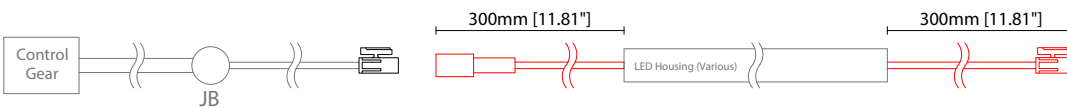
0300 D00X 300mm (11.81") Double no sheath tail



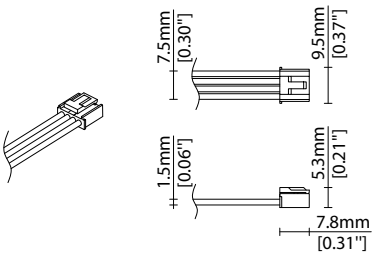
0300 S20X 300mm (11.81") Single no sheath IP20 connector



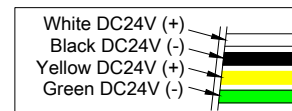
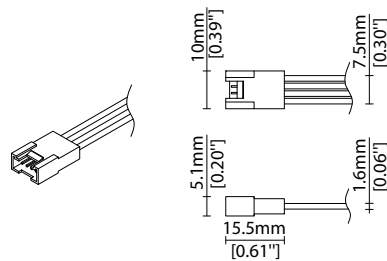
0300 D20X 300mm (11.81") Double no sheath IP20 connector



4 Pin LEDmix Female Connector



4 Pin LEDmix Male Connector

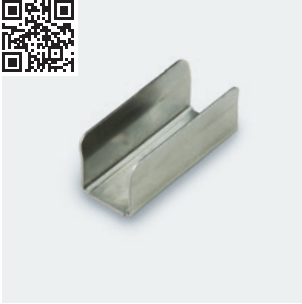


Key

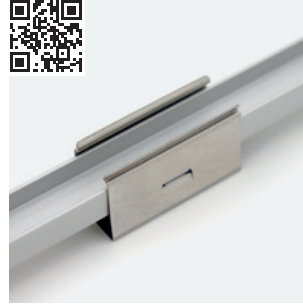
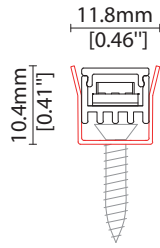
Control Gear Power supply, sub-controllers & control systems
 JB Junction box / cable connection

MOUNTING ACCESSORIES

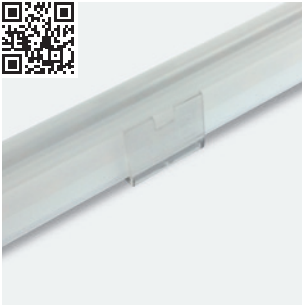
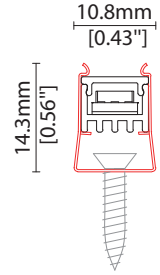
Note: Accessories are to be ordered separately with corresponding code shown below.



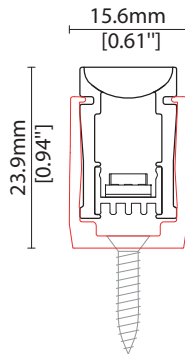
KKCP-01 (1no.)
KKCP-51 (500no.)
Clip (allow 3 per metre/40in)
S/Steel finish
L25/W11.8/H10.4mm
(L0.98/W0.46/H0.41")



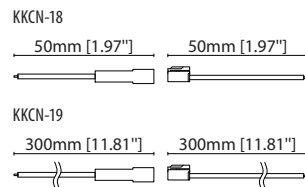
KKCP-13
Lock clip (allow 2 per metre/40in)
S/Steel finish
L25/W10.8/H14.5mm
(L0.98/W0.43/H0.57")



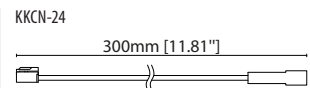
KKCP-05 (1no.)
KKCP-55 (500no.)
For use with KKLN-01 lens only
Lens lock clip (allow 3 per metre/40in)
Clear polycarbonate finish
L25/W15.6/H24mm
(L0.98/W0.61/H0.94")



POWER FEED



KKCN-18 50mm (1.97in) pair
KKCN-19 300mm (11.81in) pair
4 PIN LEDmix male + female
connector set



KKCN-24
4 PIN LEDmix 300mm (11.81in)
extension lead

KKDC CONTROL



IP20
Plastic housing
L170/W59/H29mm
(L6.69/W2.32/H1.14in)

KKDM-06 1-10V

visDIM dimmable sub-controller
(4 x 8A max @ 12-36V)



IP20
Plastic housing
L170/W53.4/H28mm
(L6.69/W2.10/H1.10in)

KKSC-05 DMX

visDIM dimmable sub-controller
(4 x 5A max @ 12-36V)



IP20
Plastic housing
L170/W59/H29mm
(L6.69/W2.32/H1.14in)

KKDL-02 DALI

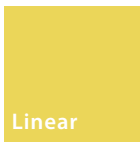
visDIM dimmable sub-controller
(4 x 8A max @ 12-36V)



IP20
Plastic housing
L166/W53.4/H23mm
(L6.54/W2.10/H0.91in)

KKDL-03 DALI

visDIM dimmable sub-controller
(4 x 5A max @ 12-36V)



TIMI

Driver/PSU Options



AVAILABLE PSU OPTIONS

| Control Mode | PSU (Order Code) | Input Voltage AC | Output Voltage DC | Rated Output Current | Rated Power | Dim % | IP Rating |
|---------------|------------------|------------------|-------------------|----------------------|-------------|-------------------|-----------|
| Switched | CEN-60-24 | 90-295V | 24V | 2.5A | 60W | - | IP67 |
| | HLG-60H-24 | 90-305V | 24V | 2.5A | 60W | - | IP67 |
| | HLG-100H-24 | 90-305V | 24V | 4.0A | 100W | - | IP67 |
| | HLG-150H-24 | 90-305V | 24V | 6.3A | 150W | - | IP67 |
| | HLG-240H-24 | 90-305V | 24V | 10A | 240W | - | IP67 |
| 0-10V (1-10V) | PWM-40-24 | 90-305V | 24V | 1.67A | 40W | 100-0.15 (100-10) | IP67 |
| | PWM-60-24 | 90-305V | 24V | 2.5A | 60W | 100-0.15 (100-10) | IP67 |
| | PWM-90-24 | 90-305V | 24V | 3.67A | 90W | 100-0.15 (100-10) | IP67 |
| | PWM-120-24 | 90-305V | 24V | 5.0A | 120W | 100-0.15 (100-10) | IP67 |
| DALI | LIN100A1 | 120-277V | 24V | 1A per channel | 100W | 100-0.1 | IP66/IP40 |
| DMX RGB | LIN100A1 | 120-277V | 24V | 1.33A per channel | 100W | 100-0.1 | IP66/IP40 |
| DMX RGBW | LIN100A1 | 120-277A | 24V | 1A per channel | 100W | 100-0.1 | IP66/IP40 |

Flicker Free Options - Combination of PSU+ sub-controller

| Control Mode | PSU (Order Code) | Sub-controller (Order Code) | Input Voltage AC | Output Voltage DC | Rated Output Current | Rated Power | Dim % | IP Rating PSU/ Sub-controller |
|----------------|------------------|-----------------------------|------------------|-------------------|----------------------|-------------|---------|-------------------------------|
| 0-10V or 1-10V | CEN-60-24 | KKDM-06 | 90-295V | 24V | 2.5A | 60W | 100-0.9 | IP67/IP20 |
| | HLG-60H-24 | KKDM-06 | 90-295V | 24V | 2.5A | 60W | 100-0.9 | IP67/IP20 |
| | HLG-100H-24 | KKDM-06 | 90-295V | 24V | 4.0A | 100W | 100-0.9 | IP67/IP20 |
| | HLG-150H-24 | KKDM-06 | 90-295V | 24V | 6.3A | 150W | 100-0.9 | IP67/IP20 |
| | HLG-240H-24 | KKDM-06 | 90-295V | 24V | 10.0A | 240W | 100-0.9 | IP67/IP20 |
| DALI | CEN-60-24 | KKDL-02/03 | 90-295V | 24V | 2.5A | 60W | 100-0.1 | IP67/IP20 |
| | HLG-60H-24 | KKDL-02/03 | 90-305V | 24V | 2.5A | 60W | 100-0.1 | IP67/IP20 |
| | HLG-100H-24 | KKDL-02/03 | 90-305V | 24V | 4.0A | 100W | 100-0.1 | IP67/IP20 |
| | HLG-150H-24 | KKDL-02/03 | 90-305V | 24V | 6.3A | 150W | 100-0.1 | IP67/IP20 |
| | HLG-240H-24 | KKDL-02/03 | 90-305V | 24V | 10.0A | 240W | 100-0.1 | IP67/IP20 |
| DMX RGB | CEN-60-24 | KKSC-05 | 90-295V | 24V | 2.5A | 60W | 100-0.9 | IP67/IP20 |
| | HLG-60H-24 | KKSC-05 | 90-305V | 24V | 2.5A | 60W | 100-0.9 | IP67/IP20 |
| | HLG-100H-24 | KKSC-05 | 90-305V | 24V | 4A | 100W | 100-0.9 | IP67/IP20 |
| | HLG-150H-24 | KKSC-05 | 90-305V | 24V | 6.3A | 150W | 100-0.9 | IP67/IP20 |
| | HLG-240H-24 | KKSC-05 | 90-305V | 24V | 10.0A | 240W | 100-0.9 | IP67/IP20 |

¹ The items shown above cover the most frequently used specification but does not exhaust the possible options

² PSU and/or driver can be chosen from the table, or KKDC may recommend the best option upon receipt of the controls requirement and installation environment

³ Electrical shop drawing will include detailed information of PSU and relevant control drivers

⁴ Cut sheets are available on the controls section of www.kkdc.lighting or upon request